

Spokane/Coeur D'Alene October 4-8, 2009

Come West this fall and experience the spectacular beauty of Eastern Washington and Northern Idaho with the Northwestern Lumber Association's Mill Tour. The mill tour is a great way to learn about the industry, travel to a different part of the country and, most importantly, meet wonderful people and have fun.

For your tour, you'll fly in and out of the Spokane International Airport. The first night we gather for a reception where you will get to know your fellow travelers. On Monday morning, we'll depart for the Grand Coulee Dam, one of the world's modern marvels and the largest dam in North America. We end Monday afternoon at the magnificent Coeur D'Alene Resort, which will be our home base for three nights. From there, we will travel way up the panhandle of Idaho to visit Caribou Creek Log Homes, where they make handcrafted log homes. We will visit Idaho Forest Group, the largest forest products company in Idaho, and Potlatch Corporation, one of the nation's oldest forest products companies.

We will also be visiting two wineries, touring a gold mine and taking a cruise on Lake Coeur D'Alene. You will also have time to explore Coeur D'Alene and enjoy the shopping and sights of the area.

Register quickly to attend Northwestern Lumber Association's annual mill tour as space is limited. This year, the tour will begin in Spokane, Washington on the evening of October 4 with a welcome reception. At the reception you will meet your fellow travelers, go over the detailed itinerary and receive your souvenir attire. The tour will conclude when we arrive back at the Doubletree Hotel on Thursday afternoon and a room for Thursday night is included in the package.

The Doubletree Hotel has a free airport shuttle and is conveniently located downtown next to River Park, and in walking distance to restaurants and shopping. The Coeur D'Alene Resort is in the heart of Coeur D'Alene and in walking distance to restaurants and shopping. If you are interested in arriving early or staying a few extra days, the hotels will honor our special group rate. Additionally, the Coeur D'Alene Resort has offered us a very good price on Deluxe Rooms. For an additional \$140, you can upgrade your room from the traditional room (included in price of package) to the deluxe room.

We strongly recommend you book your flights once you have received your tour confirmation guaranteeing you a seat on the bus. Make your reservations to fly into and out of Spokane International Airport. Registration deadline for the tour is **August 1**.

For more information, call Sally Means at 800-896-5134 or e-mail smeans@nlassn.org.

If you no longer wish to receive mailings for this or future tours, please check here and fax or mail back.

Tour Package Includes

Ground Transportation, Lodging, Welcome Reception, Industry Tours, Excursion Tickets, Bus Refreshments, and Lunches

\$1,200

Per Person, double

\$1,540

Per Person, single]

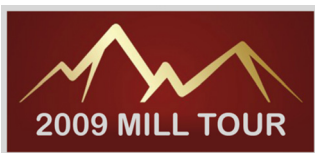
Additional Option

Upgrade to a Deluxe Room at the Coeur D'Alene Resort. Deluxe rooms offer a view and contemporary Italian furnishings.

\$140

Coeur D'Alene Upgrade (3 nights)



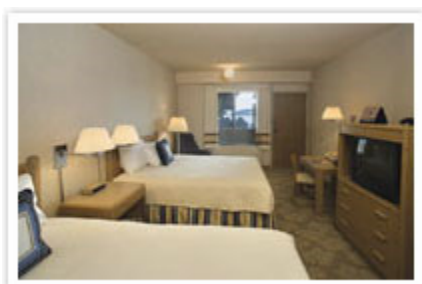
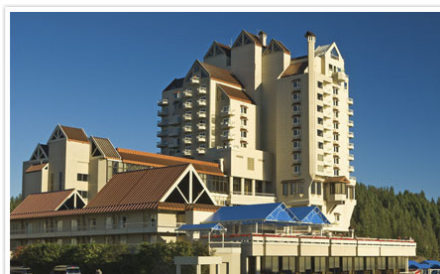


Doubletree Hotel Spokane City Center October 4th & 8th



Rooms are comfortable and spacious, offering great views of the Spokane River, Riverfront Park, or the city skyline. All rooms include the Sweet Dreams® by Doubletree sleep experience, a business-ready work desk, and two telephones with voicemail capability. Special amenities include: free high-speed wireless Internet, Doubletree clock/radio with MP3 connection, coffee/tea service, deluxe Neutrogena® bathroom products, and USA Today® delivered Monday - Friday.

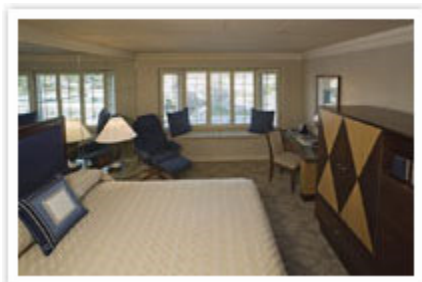
Coeur D'Alene Golf & Spa Resort October 5th - 7th



Traditional Room

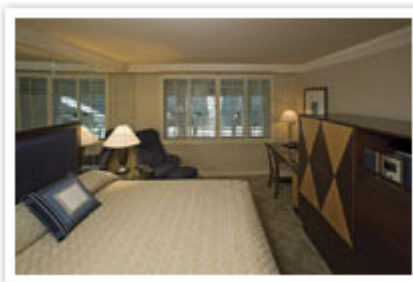
Comfortable, well appointed rooms located in the Original North Wing section of The Resort. These non view accommodations serve the needs of guests who appreciate the value of a full-service resort at a minimum rate. Room amenities include executive style work desk, wireless internet access, cotton robes, luxury toiletries, hair dryer, iron and board, 27" TV, in-room movies, clock/radio and complimentary coffee & tea.

Deluxe East Park Marina Room*



Well appointed with contemporary Italian furnishings, and large bay windows with Park Marina views.

Deluxe Limited View*



Well appointed with contemporary Italian furnishings, wall-to-wall picture windows with limited views.

Deluxe West Lake View*



Well appointed with contemporary Italian furnishings, wall-to-wall picture windows

Room amenities include executive style work desk, cotton robes, luxury toiletries, hair dryer, iron and board, 27" TV, in-room movies, clock/radio, wireless internet access and complimentary coffee & tea.

* Room will be assigned by hotel depending on availability.



Registration Form

Preliminary Schedule

Sunday, October 4

5:30 – 7 pm Welcome Reception
Spokane Hotel

Monday, October 5

8:00 am Bus Pick Up at Hotel
10:00 – 11:00 am Grand Coulee Dam Visitor Center
11:15 – 11:45 am Grand Coulee Dam Tour
12:30 – 1:30 pm Homestead Cafe
1:30 – 2:30 pm Whitestone Winery
4:30 pm Arrive at Coeur D'Alene Resort
Hotel 3 nights at Coeur D'Alene Resort

Tuesday, October 6

8:00 am Leave for Caribou Homes
10:00 – 11:30 am Caribou Homes
Noon – 1:30 pm Lunch at Kootenai Casino
4:30 – 6:30 pm Lake Coeur D'Alene Cruise

Wednesday, October 7

9:00 am Leave for Idaho Forest Group
9:30 – 11:30 am Idaho Forest Group
11:30 am – 12:30 pm Lunch - TBD
1:30 – 2:30 pm Crystal Gold Mine Tour
3:30 pm Arrive at resort

Thursday, October 8

8:00 am Leave for Potlatch Corporation
9:30 – 11:30 am Potlatch Corporation – Plywood Mill
11:30 am – 12:30 pm Lunch at Potlatch Corp
1:00 – 2:00 pm Harvesting Site - TBD
3:30 – 4:30 pm Arbor Crest Winery
5:00 pm Arrive at Spokane Hotel
Mill Tour Concludes

Primary Name: _____

Guest Name (s) : _____

Company: _____

Address: _____

City: _____ State/Province: _____ ZIP: _____

Telephone: _____ Fax: _____

E-mail: _____

Shirt Size(s):	Primary	<input type="checkbox"/>	Mens	____	Size	<input type="checkbox"/>	Ladies	____	Size
	Guest#1	<input type="checkbox"/>	Mens	____	Size	<input type="checkbox"/>	Ladies	____	Size
	Guest#2	<input type="checkbox"/>	Mens	____	Size	<input type="checkbox"/>	Ladies	____	Size
	Guest#3	<input type="checkbox"/>	Mens	____	Size	<input type="checkbox"/>	Ladies	____	Size

Return a copy of this form with your \$300 per person non-refundable deposit by **August 1**.

Payment may be made by check (payable to Northwestern Lumber Association) or by credit card:

Account No. _____ Exp. Date _____ MasterCard ___ Visa ___

Signature _____ 3-Digit Code _____

Price: \$1,200 per person, double \$1,540 per person, single \$140 Coeur D'Alene Upgrade (3 nights)

Fax to: (763) 595-4060

Mail to: Northwestern Lumber Association, 1405 Lilac Dr. N., Suite 130, Minneapolis, MN 55422